

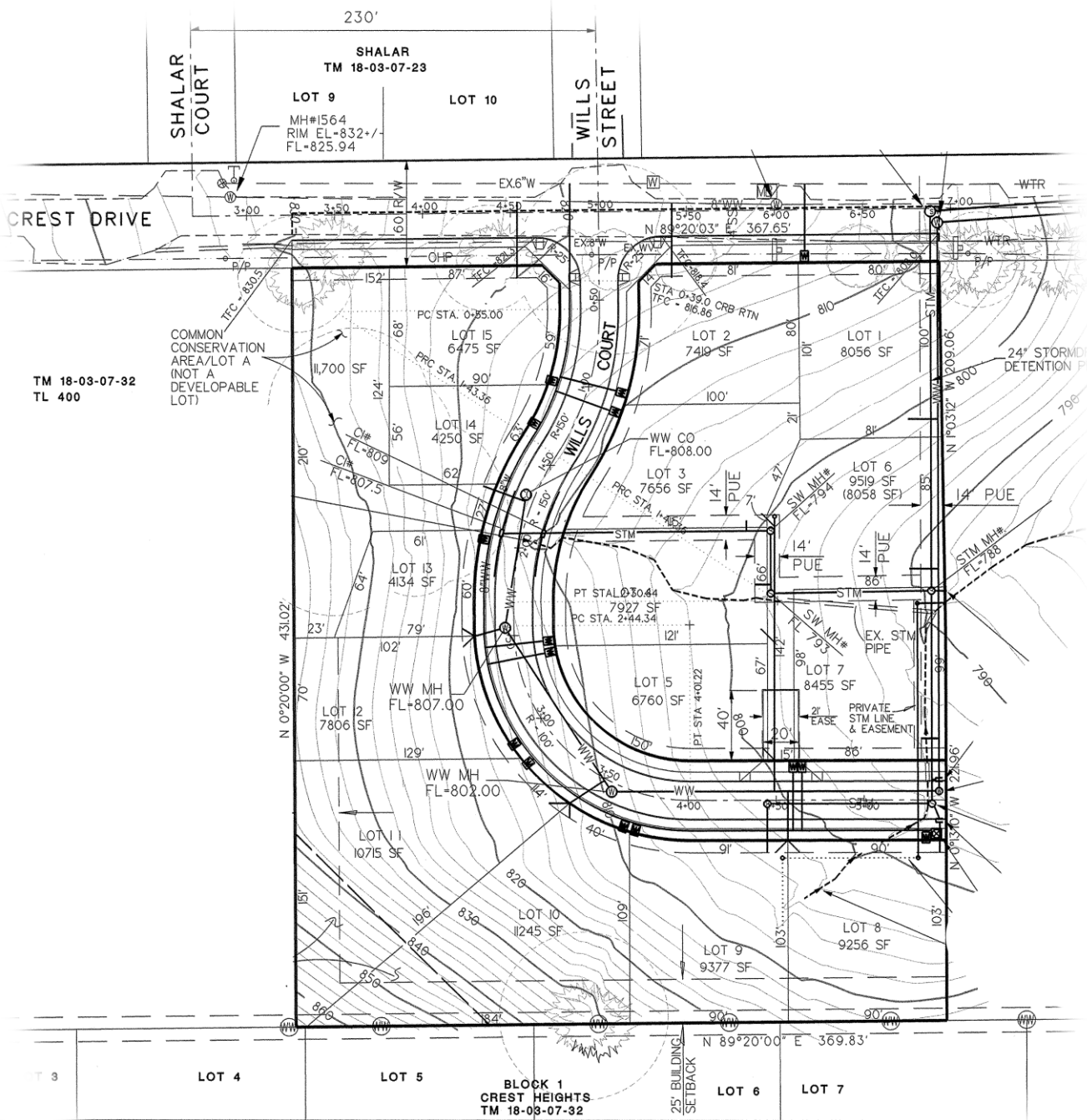
*Jordan Iverson*  
**JORDAN IVERSON**  
**SIGNATURE HOMES**



3,369 sq/ft of living space. 3 large bedrooms, 2 ½ baths, office/study, large recreation room, & luxurious covered outdoor living/cooking area. Innovative design & the latest in luxury finishes & materials. See through fireplace, indoor & outdoor water features. Amazing Master Bedroom/Spa Retreat w/views. Extensive use of interior & exterior stone & exposed wood details.

New Homes from approximately \$450's-700k  
Please ask about our custom design/build options also!

541.579.3604 [www.IversonSignatureHomes.com](http://www.IversonSignatureHomes.com)



- Only 15 home sites are available in this wonderful South Eugene neighborhood.
- Walking distance to Lafferty Park, Wayne Morris Ranch and Crest Drive School
- Crest Drive Elementary, Spencer Butte Middle, South Eugene High School
- Natural Conservation Area
- Close to the new Woodfield Station shopping center & Market of Choice