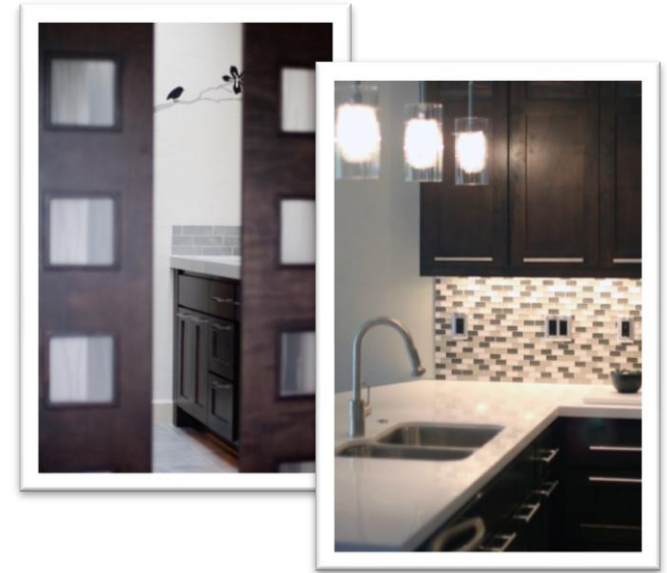
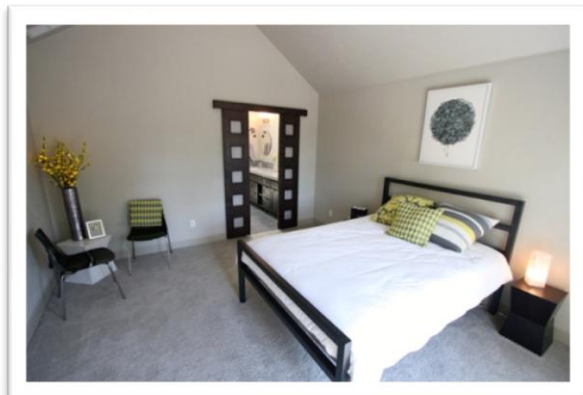
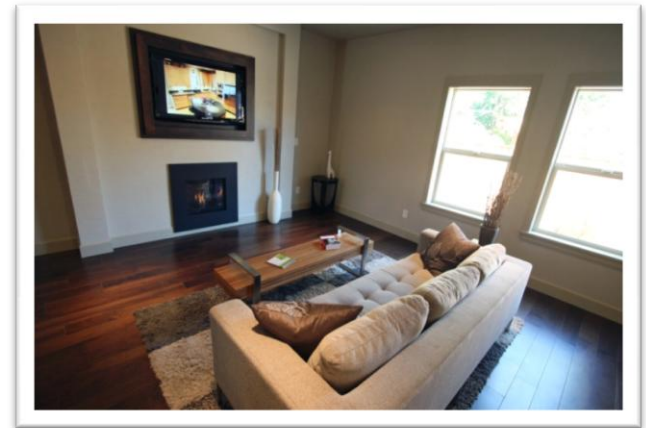
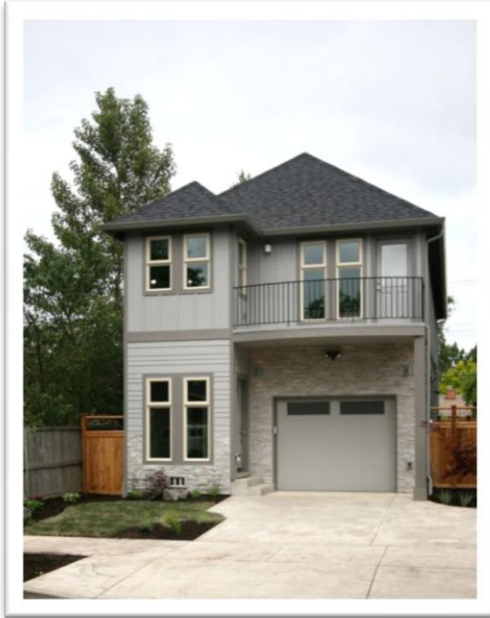


Jordan Iverson
JORDAN IVERSON
SIGNATURE HOMES

THE 4 THE FOUR AT
LINCOLN STREET



Each of the 4 homes offer upscale, downtown living & exude modern elegance. Features include 2 large, vaulted bedrooms, open loft/office space, garage, fenced yard & no common walls. Stylish details include cable rail stairways, clean lined fixtures, pre-wired sound & iPod ports, stylish lighting, efficient tankless water heaters, ribbon flame SoHo fireplace, flat panel TV niches, engineered quartz counters, & glass mosaic tiles. Built for ENERGY STAR & Earth Advantage SILVER+ certification.

Only 2 left for pre-sale! (both in permit phase)
Also ask about our custom design/build & interior design services!

CCB # 50854. Seller is a licensed Realtor in OR. Information above is deemed reliable, but not guaranteed.

541.579.3604 www.IversonSignatureHomes.com

Benefits & Amenities:

Entry/Gallery

- Smoked Walnut Hardwood Floors
- Arched Art Niche
- Art/Visual Media Insets
- Built in Digital Photo Frames

Living Area

- Smoked Walnut Hardwood Floors
- Fireplace feature wall
- Built-in Media storage
- "SoHo" gas fireplace with cylindrical flame and glass beads
- Built-in 42" Panasonic plasma TV
- Innovative "hidden" storage space for audio/video equipment, etc.

Kitchen

- Smoked Walnut Hardwood Floors
- Custom Alder cabinets w/"Mocha" stain
- Stainless steel appliances
- Engineered Quartz Slab Counters
- "Memo Niche" with chalkboard finish for notes, reminders, etc.
- Eco-Resin inset panels in upper cabinets infused with natural reeds
- Built-in "Cookbook cabinet" on end of peninsula
- Unique ceiling soffit detail with plenty of task and workspace lighting

Loft/Office

- Built-in hardwood Alder workspace
- Views of Spencer's Butte
- Wired for high speed & Ethernet.

Master Bedroom

- Soaring vaults
- Tall "awning" style windows
- Balcony with views

- Designer Ceiling Fan
- Pre-wired for speakers
- Wired for Built-in iPod port
- Enter the bath through "Barn Door" sliders w/infused "Eco-Resin" inserts

Master Bath

- "Mocha" stained Alder cabinets
- Full tile step-in shower
- Built-in custom Alder linen
- Large 12x24" tiles on floor
- Engineered Quartz Counters
- 2 skylights allow the sun to fill the room with natural light
- Motion controlled lighting
- Full height dressing mirror built-in
- Spacious walk-in closet
- Enclosed toilet area with door

Additional Bedroom

- Vaulted with walk-in closet & Fan

Powder Room

- "Mocha" stained custom Alder cabinet w/ Stainless Steel countertop bowl sink

Full Bath

- Custom "Mocha" stained Alder vanity with Engineered Quartz counters
- Tub/shower & undermount sink

Upstairs Hallway/Gallery

- Light filled with private thoughtfully placed windows
- Art Niches

Laundry

- "Bat Wing" doors for easy access
- Built-in storage

Additional Features

- Low water use landscaping
- Automatic Sprinklers
- Hand trowelled plaster walls throughout
- Abundant storage and built-ins